

PO Box 1847  
Post Falls, ID 83877-1847  
T 208-773-3885  
F 208-773-3799  
E <ContactUs@SummitEq.com>

- Vertical balers
  - 36"W & 42"W
  - 48"W
  - 60"W
  - 72"W
  - specialized
- Horizontal closed-door balers
  - 'B' series
  - 'C' series
  - 'D' series
  - 'E' series
  - 'F' series
  - specialized
- Horizontal open-end balers
  - Standard-duty series
  - Heavy-duty 'B' series
  - Heavy-duty 'C' series
  - Heavy-duty 'D' series
  - Heavy-duty 'E' series
  - specialized
- Twin-ram balers**
  - Standard-duty series
  - Heavy-duty series
- Scrap metal balers
- Oil filter balers
- Conveyors
  - Slider-bed
  - Chain-belt
- Fluffers
- Cart dumpers
- Self-contained compactors
- Stationary compactors

Design assistance with waste and recycling flow, site fit, etc.

# PR Series 2-Ram Balers



**Large baler performance in a scaled-down size and price**

**Multi-purpose baling of: Papers • Plastics  
Non-ferrous Metals • Municipal Solid Waste**

**Manual or Automatic Operation**

**Choices of: Sizes • Speeds • Horsepowers • Hoppers  
Etc. to fit site**

**Competitive prices and delivery times**

**PLC Control • Phone modem available  
12-mo./2,000 hr. warranty**

**Performance & Durability in an economical package**

**Owner references available**

*Engineered for Peak  
Performance*

## FEATURES

- ✓ Engineered to provide maximum production per dollar invested
- ✓ 3" - 6" - 9" staged overtravel and indicators built into every model
- ✓ Optional switchable full platen penetration available for each model, to achieve extra density in plastics and metal
- ✓ Bale aspect ratio allows production of dense, stackable bales of computer printout and newspaper without shredding or other pre-conditioning
- ✓ Plastic bales will safely stack 6 high
- ✓ Smart design trapezoidal shear is in multiple 4-edged pieces, removable, reversible, and fully adjustable for long life and floor protection
- ✓ Remote power unit reduces noise, vibration, and fatigue, and can be shrouded on-site for further protection
- ✓ Auxiliary power for filtration, cooling, valve pilot pressure, and tying is provided standard, freeing 100% of the main system power for baling
- ✓ Replaceable wear-liners of plug-welded T-1 steel plate give years of life
- ✓ Standard slatted floor and platen bottom protect sides, shear, and floor
- ✓ Simplified multi-stage hydraulic system reduces overall horsepower requirements
- ✓ Oil-to-air cooling system protects hydraulic fluid
- ✓ Built with standard brand-name components; No hard-to-get factory parts
- ✓ Standard Programmable Controller and available phone modem connections for factory-direct monitoring.
- ✓ Keyplate/flange and floating mounts protect both cylinders

## TYPICAL PERFORMANCE RATINGS

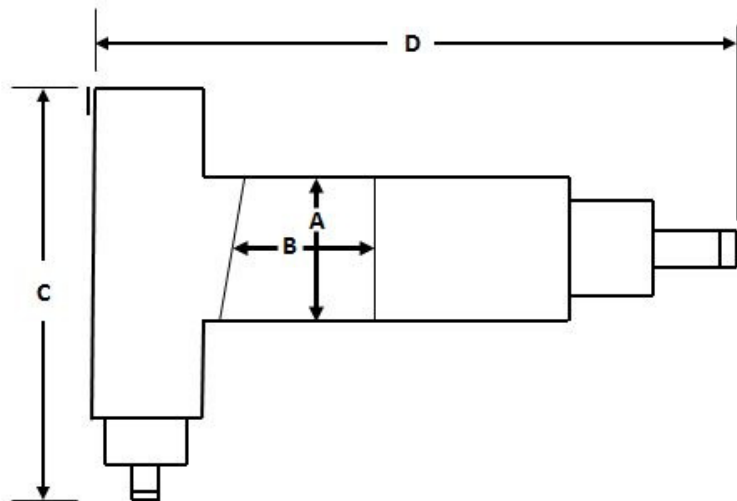
		OCC	ONP	CPO	UBC (1)	PET (1) HDPE	SORTED WASTE (2)
PR-9	Bale weight, lbs.	1000	1300	1300	800	800	1500
	Bale density, lbs./cu.ft.	28	37	37	22	22	42
	Tons per hour (3)	5 tph	10 tph	10 tph	2.5 tph	2.5 tph	12 tph
PR-9X	Bale weight, lbs.	1000	1300	1300	800	800	1500
	Bale density, lbs./cu.ft.	28	37	37	22	22	42
	Tons per hour (3)	7 tph	15 tph	15 tph	3.5 tph	3.5 tph	18 tph
PR-10	Bale weight, lbs.	1100	1400	1400	1000	1000	1700
	Bale density, lbs./cu.ft.	31	40	40	28	28	48
	Tons per hour (3)	5 tph	10 tph	10 tph	2.5 tph	2.5 tph	12 tph
PR-10X	Bale weight, lbs.	1100	1400	1400	1000	1000	1700
	Bale density, lbs./cu.ft.	31	40	40	28	28	48
	Tons per hour (3)	7 tph	15 tph	15 tph	3.5 tph	3.5 tph	18 tph
PR-12	Bale weight, lbs.	1450	1800	1800	1200	1200	2000
	Bale density, lbs./cu.ft.	30	37	37	25	25	41
	Tons per hour	10 tph	20 tph	20 tph	5 tph	5 tph	25 tph

(1) Using optional full penetration

(2) Ferrous metal removed

(3) With optional auto-tie

## SPECIFICATIONS



	Baling Cylinder	Ejection Cylinder	Baling (a) HP	Cycle Time (b)	Cubic Feet per Hour (b)	Bale Size Chambered	Dimensions (c)				Ht(d)
							A	B	C	D	
PR-9	9"	8"	60	18 sec	8,500	30x44x46	44"	56"	14'	20'	91"
PR-9X	9"	8"	60	18 sec	11,000	30x44x46	44"	72"	14'	23'	91"
PR-10	10"	8"	75	18 sec	8,500	30x44x46	44"	56"	14'	20'	91"
PR-10X	10"	8"	75	18 sec	11,000	30x44x46	44"	72"	14'	20'	91"
PR-12	12"	10"	100	18 sec	20,000	30x60x46	60"	96"	17'	27'	91"

(a) All horsepower us applied to baling. Supplemental power is provided for filtration, cooling, valve pilot pressure, and auto-tie operation

(b) No load, without penetration option active

(c) Plus skid-mounted power unit

(d) To top of standard feed hopper



PO Box 1847  
Post Falls, ID 83877-1847  
T 208-773-3885  
F 208-773-3799  
E <ContactUs@SummitEq.com>