

NEW!

OBERG® SB-600

Oil Filter Baler

Fully Automatic!



Process 17-19 Drums Per Hour/Continuous Feeding

Makes 6" x 6" x variable length bricks



Call for more info: **(800) 848-8228**

Bedford Industries Inc.
Monroe, WA

www.oberg-crusher.com



OBERG® SB-600

GENERAL

Brick size (chambered)	6"W x 6"H x variable length (avg 15.6")
Brick weight range	45-58 lbs (avg 50 lbs)
Brick density range	128-148 lbs/cu.ft.
Load opening	18" x 20 1/2" (+ hopper to suit loading)
Brick cycle time	variable (avg 57.5 seconds)
Throughput in tons	1.56 tons per hour
Throughput in drums	18.7 (55-gallon drums) per hour

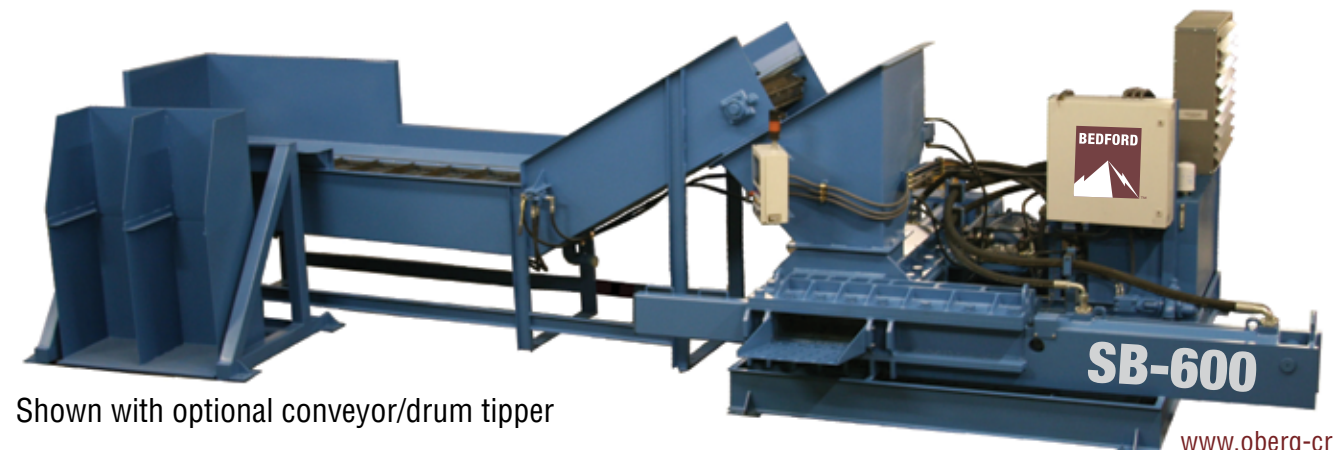
POWER

Motor	50 HP
Line power	480 VAC 60Hz. 3Ø, across-the-line starting; other voltages at upcharge
Hydraulic pump	78 GPM + 6 GPM auxiliary
System line pressure	3,000 maximum
Total force	190,851 lbs
Platen face pressure	5,301 PSI
Cylinder(s)	(2) 9" x 34" x 5"
Safety shutdown	Mushroom-headed emergency STOP
System protection	electrical and mechanical, manual and auto
Fluid reservoir	160 gallons; supplied with fluid & breather
Filtration	replaceable-cartridge filter & cleanliness indicator
Certification	listed to UL508A

STRUCTURAL

Overall length	13' 3" (11' 6 1/2" shipping length)
Overall width	13' 3" (10' 10 1/2" shipping length)
Approx ship weight	17,000 lb
Shear	removable/flippable without disassembly
Sump	78 gallons (optional auto pump-out)
Serviceability	all wear surfaces replaceable; top removes for easy access to internal moving parts

Specifications subject to change at Manufacturer's discretion



Shown with optional conveyor/drum tipper

www.oberg-crusher.com

14512 - 167TH AVE. SE SUITE 192 MONROE, WA 98272

Local 360-805-9099
Toll Free 800-848-8228
Fax 360-805-4343